



Hybrid Cloud

CLEMENS ESSER - HPE



Hewlett Packard
Enterprise



Hewlett Packard
Enterprise

Journey to Hybrid IT

Clemens.Esser@hpe.com
CTO HPE NL



55B

devices will be
connected worldwide
by 2025¹

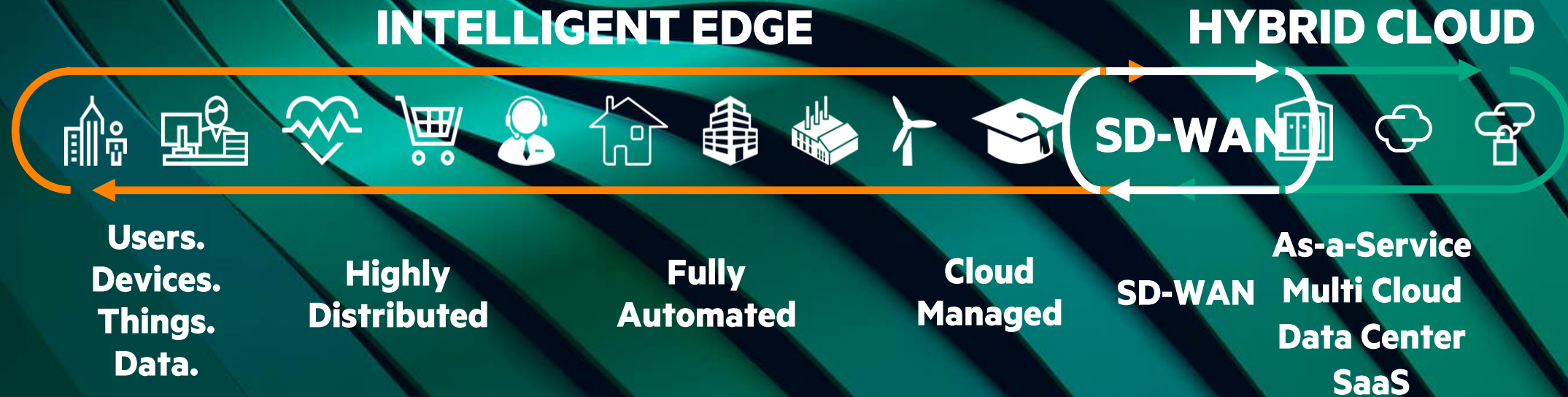
EDGE DATA DRIVES THE NEXT LEVEL OF TRANSFORMATION

75%

... of data will be created
and processed at the edge
outside the traditional
data center or cloud²

1 Source: IDC
2 Source: Gartner

The Future is Edge-to-Cloud



Trends accelerating on-premises cloud adoption

92% of enterprises have adopted a multi-cloud strategy¹

70% of applications are outside the public cloud²

50% of datacenters will be operated via an as-a-service consumption model by 2024³

- 1 Flexera 2021 State of the Cloud Report
- 2 IDC Cloud Pulse
- 3 IDC's Worldwide Consumption-Based IT Infrastructure Taxonomy, 2020

THE CLOUD OPERATING MODEL

Public cloud experience

On-premises control

Business agility

Data sovereignty

Cloud experience

Performance

Cloud economics

Fit-for-purpose

Automation

Security, IP, privacy

Scalability

Optimized TCO

Bring the two worlds together
cloud everywhere
...on your terms

Organizations are now asking:

How can I get the
cloud operational experience
with a self-managed model for my business?



HPE GREENLAKE FOR PRIVATE CLOUD

Common pool of infrastructure

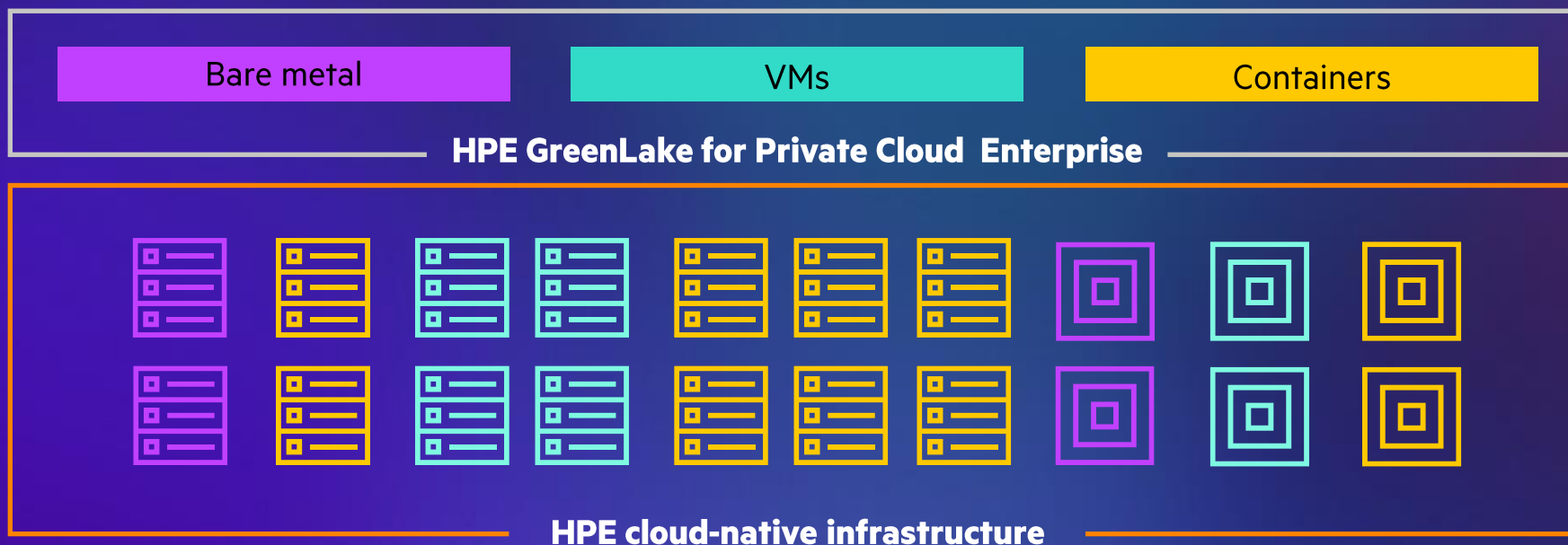
Automated provisioning
Allocate capacity across services

Seamless experience

Single UX (Portal, API, CLI)
Self-service

Production-ready

Workload optimized
Consistent performance



Business agility

Quick to start up
Time to market

Low TCO

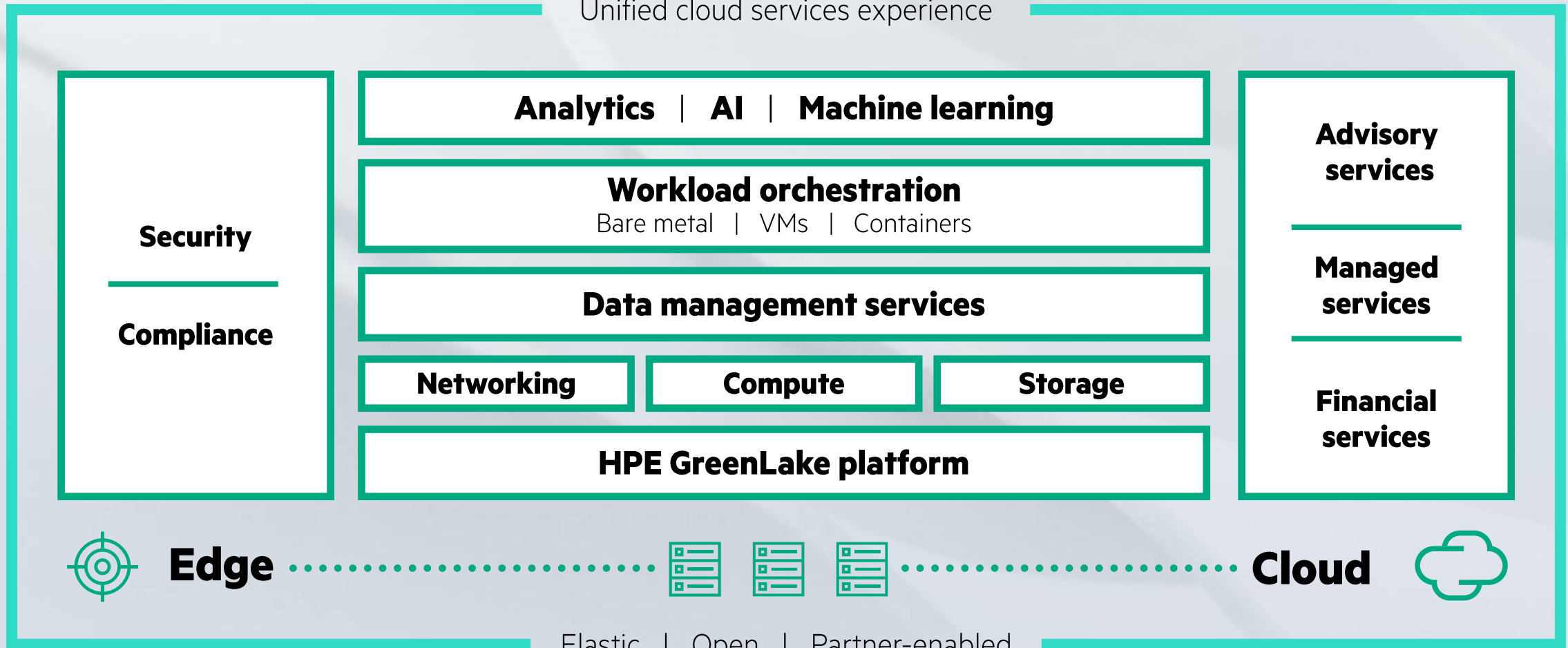
Consumption based
Predictable cost

Workforce & skills

Managed—SRE focus
IT can focus up the stack

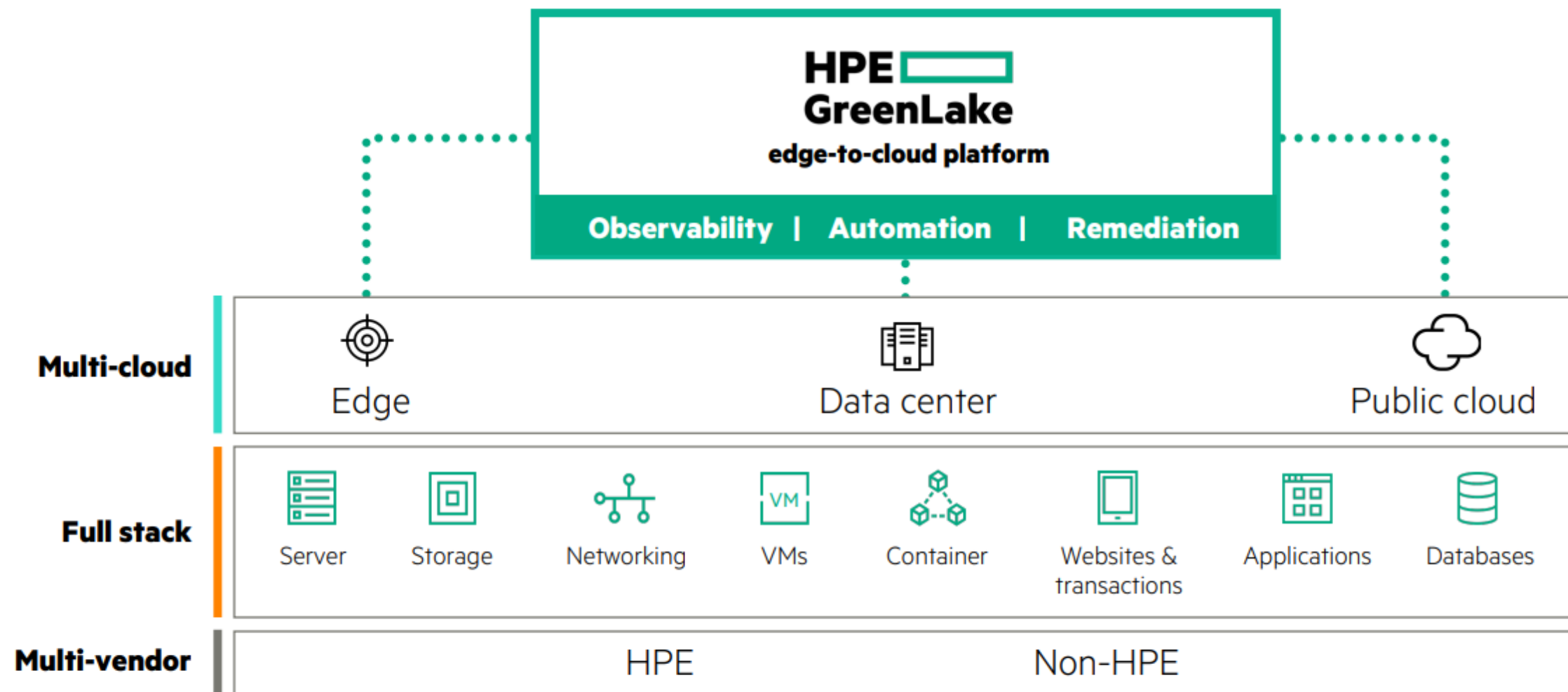
The HPE GreenLake edge-to-cloud platform uniquely meets hybrid needs

Unified cloud services experience



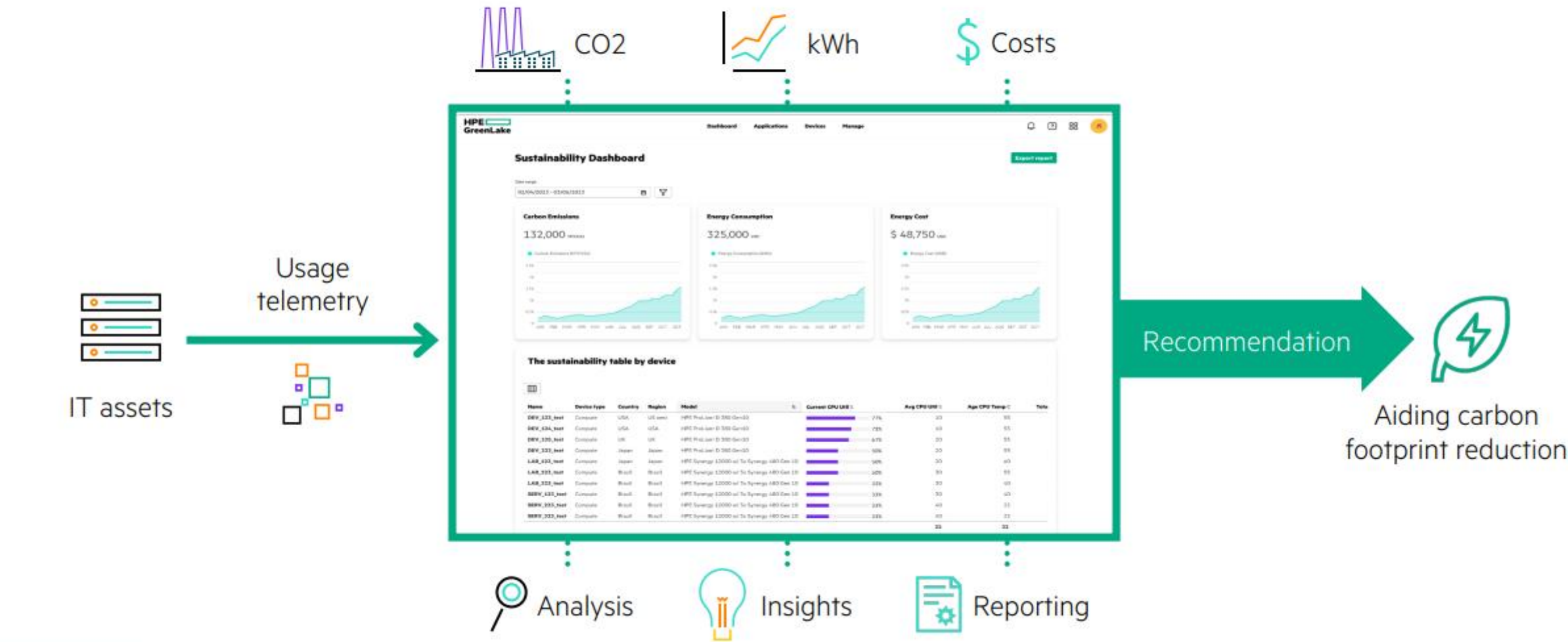
An AIOps-driven hybrid cloud platform

Hybrid ITOps management for a heterogeneous environment



Sustainability Dashboard

Providing a holistic view of the energy profile, generating reports, and creating a dashboard



Consumption analytics*

Empowering ITOps and FinOps

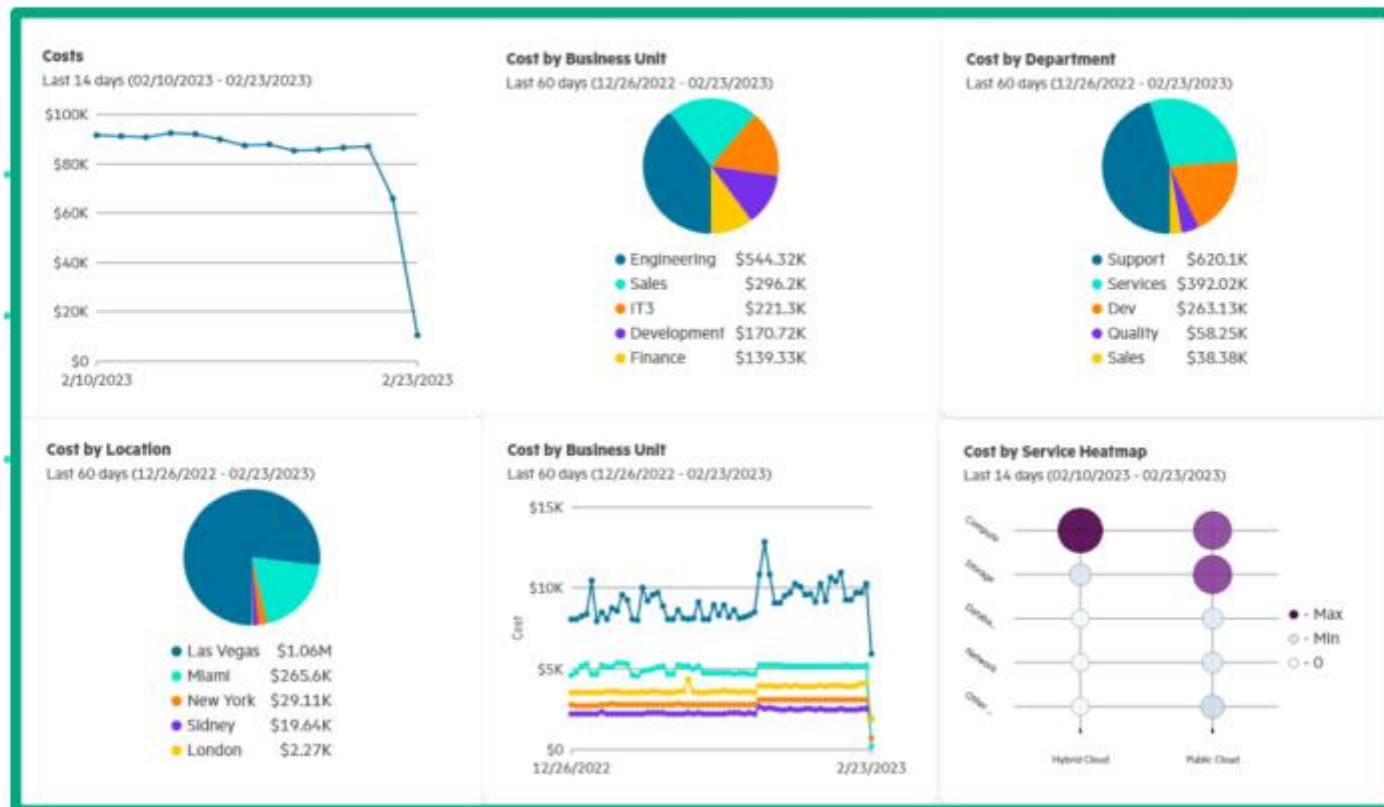
Usage report



Sizing/config aid



Capacity planning



Cost report



Showback

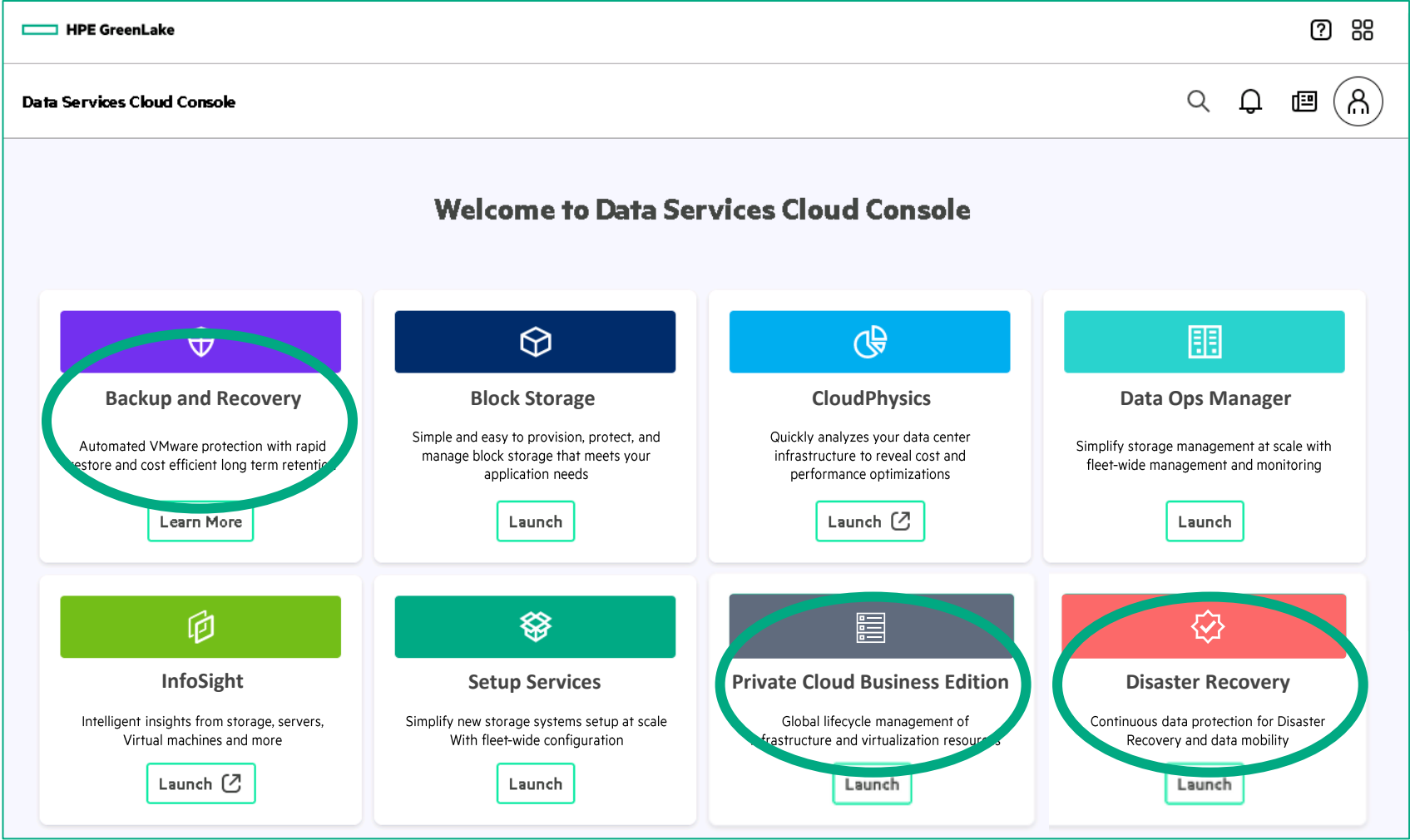


Cost optimization

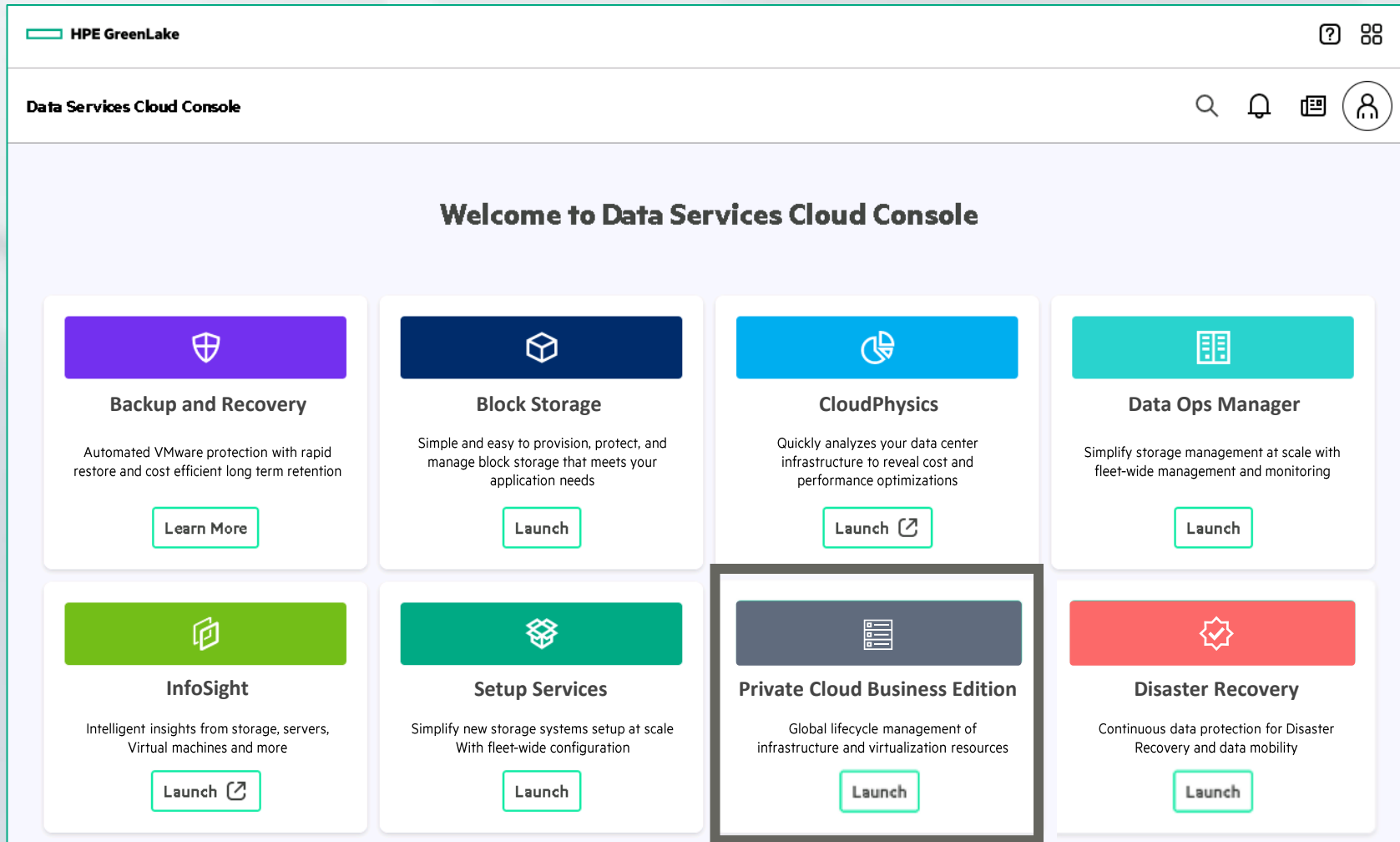


* Through GreenLake Central

HPE Data Services Cloud Console (DSCC) welcome page



HPE Data Services Cloud Console (DSCC) welcome page



Effortless hybrid cloud experience with HPE GreenLake For Private Cloud Business Edition

Global dashboard

View of all VMs and clusters on-premises or in the public cloud

Setup service

Automate deployment—blueprint-based setup of the stack

Lifecycle management

Simplify stack update

VM management

View and manage VMs on-premises or in the public cloud

VM provisioning

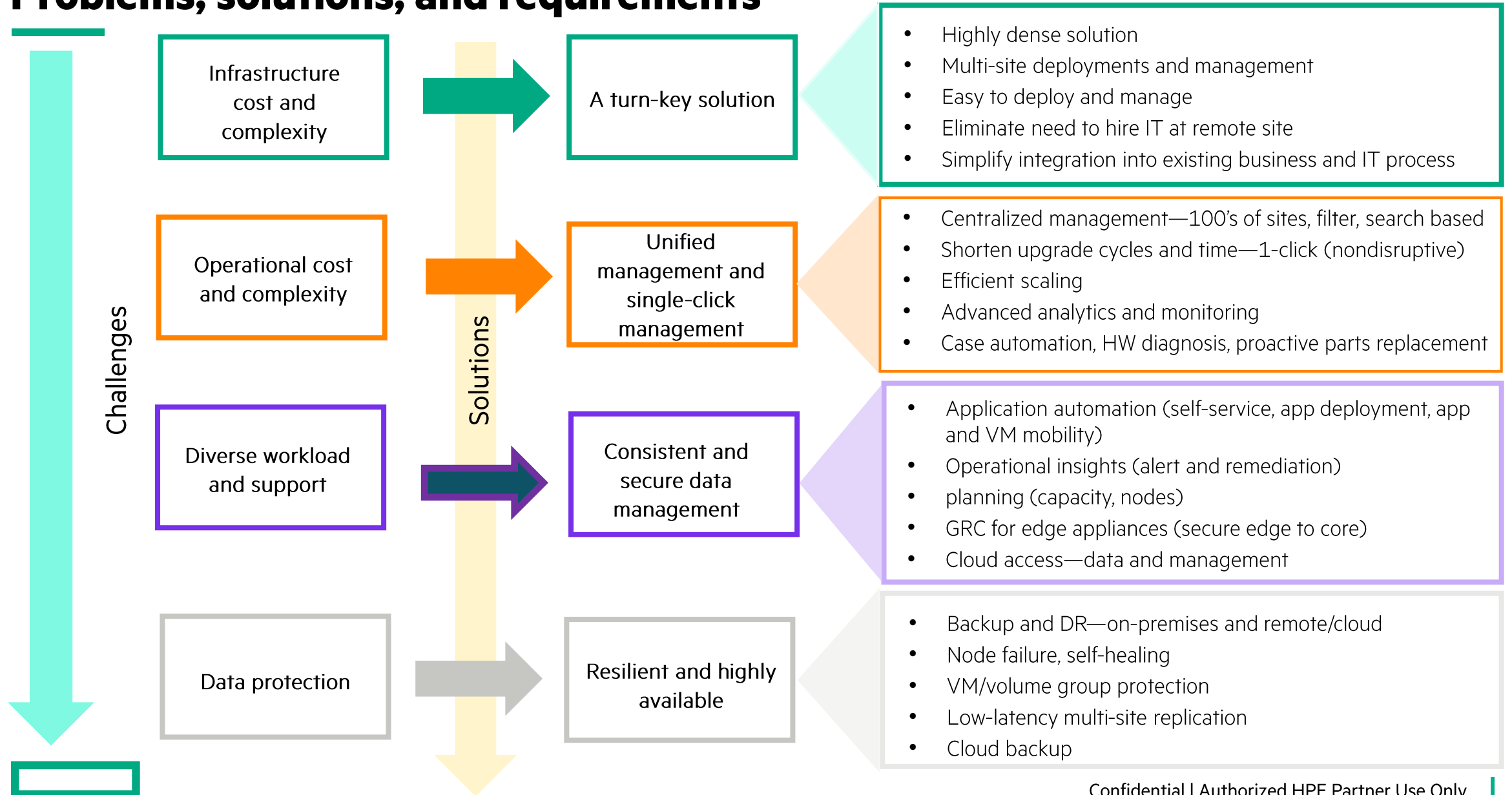
Easily provision VMs on-premises or in the public cloud

Enhanced capabilities

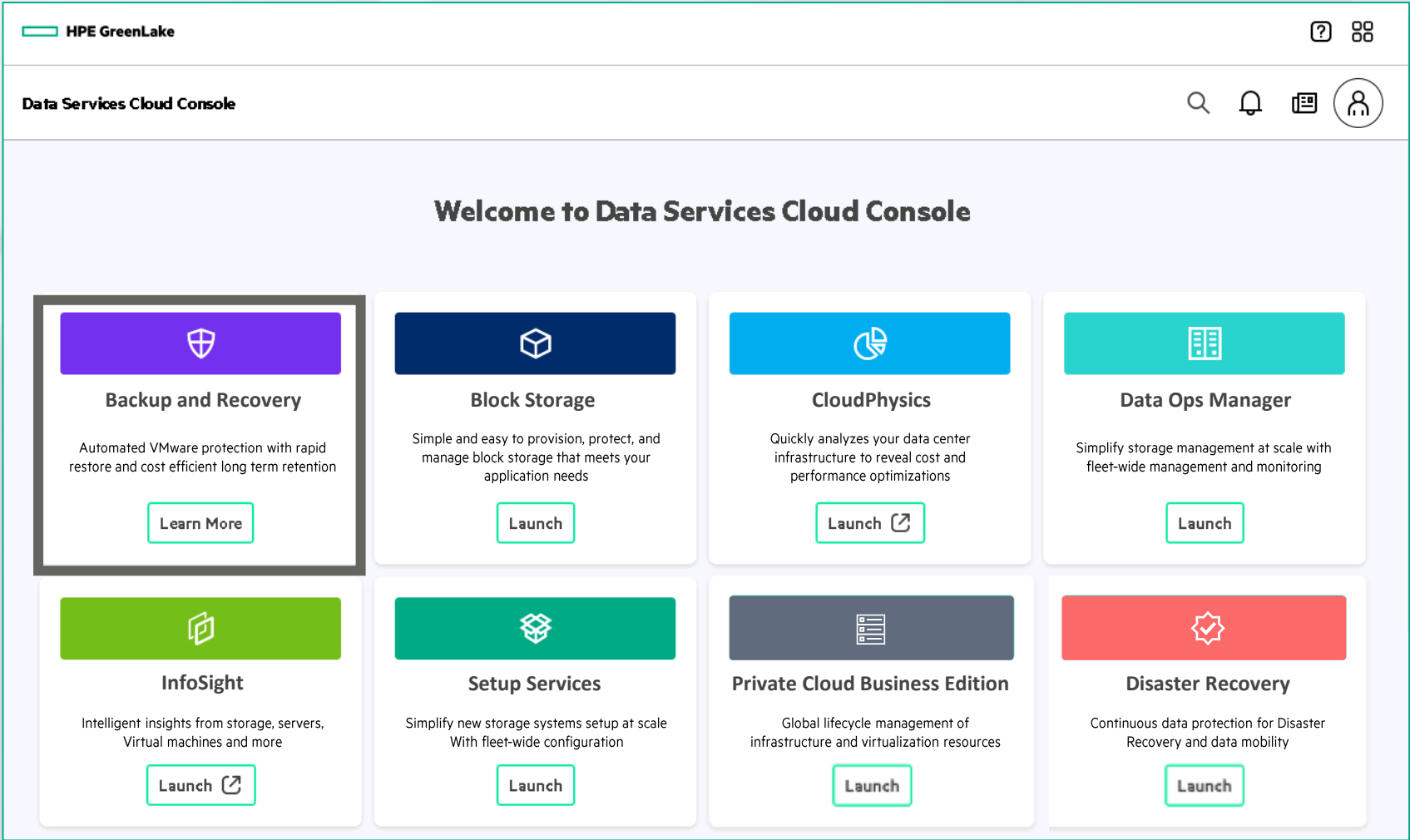
Enables enhanced capabilities leveraging the power of DSCC



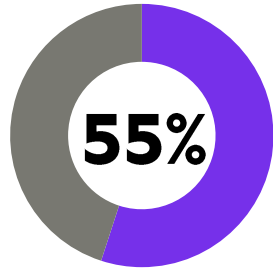
Problems, solutions, and requirements



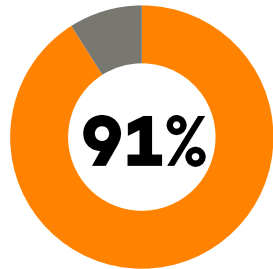
HPE Data Services Cloud Console (DSCC) welcome page



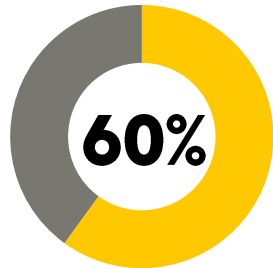
Modernizing data protection is essential to every business



Of organizations will migrate to a cloud centric data protection model¹



of industrial organizations are vulnerable to cyber-attacks²



Organizations have suffered an unrecoverable data loss³

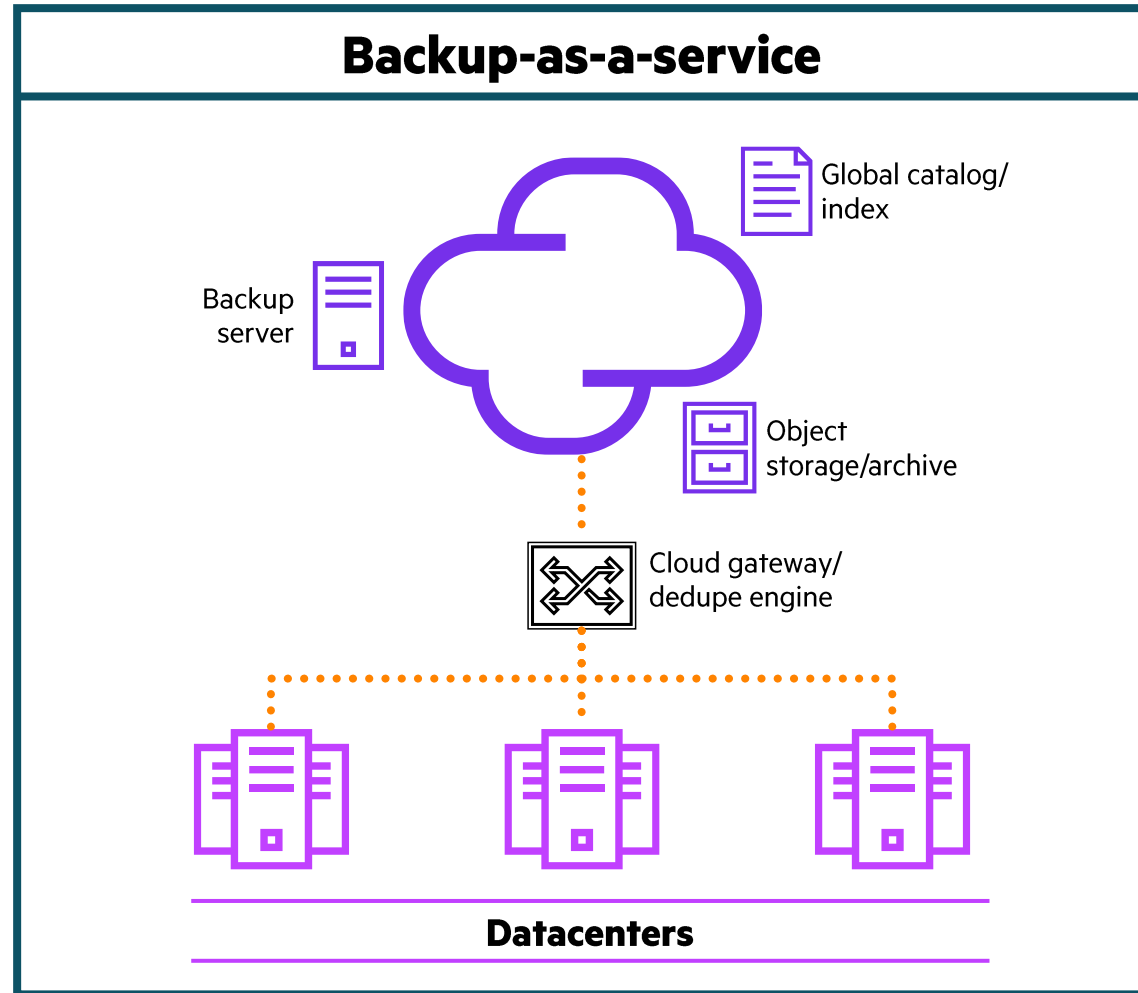
¹ IDC State of ransomware and DR preparedness , 2022

² Information security risks report

³ IDC State of ransomware and DR preparedness , 2022

Simplify data protection with Backup-as-a-Service

Ensure consistent data protection eliminating complexities



Easy to scale

Operational simplicity

Efficient, single point of administration,

Leverage SaaS: elastic resources,
economies of scale for secondary storage

Global catalog and index, increasing compliance and
consistent protection policies

HPE GreenLake for Backup and Recovery

Designed to protect on-prem VMware VMs and MS SQL Server¹ across hybrid cloud*

Effortless

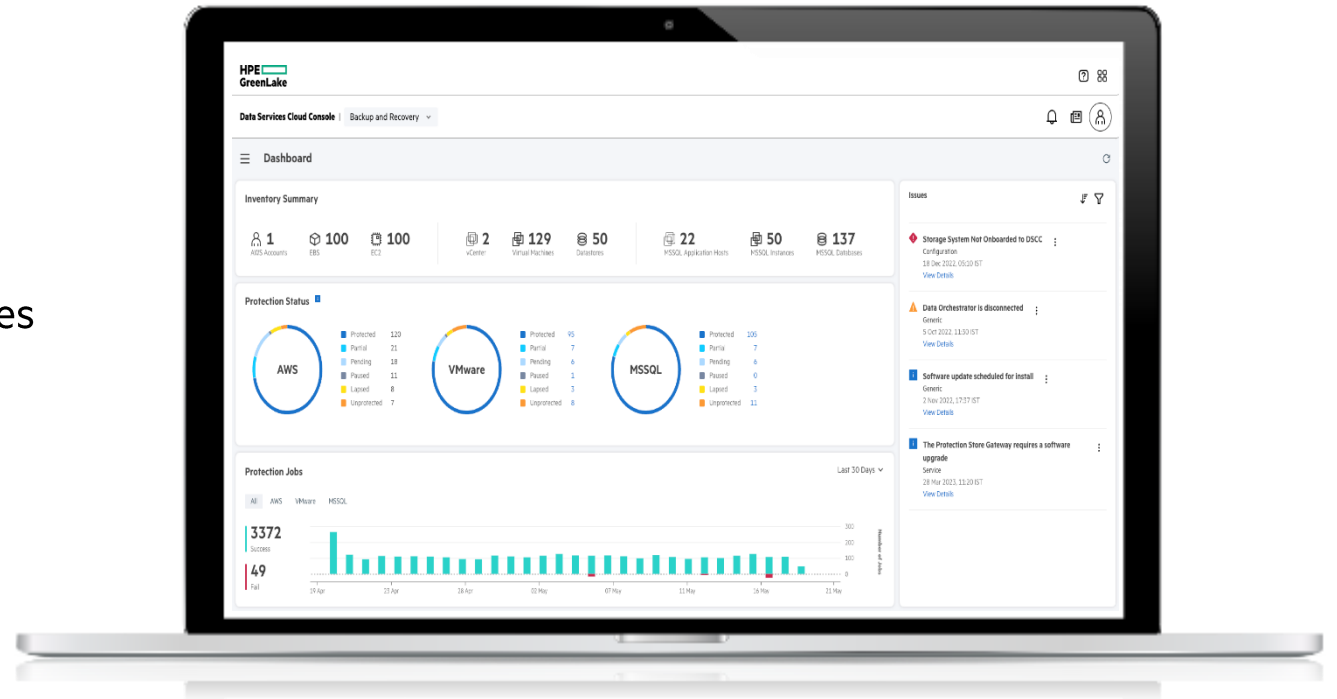
- Automated, protection policies
- Single control plane for managing infrastructure, data protection across private cloud
- User defined tiering

Efficient

- Up to 8x** more efficient than other protection services
- Faster backup/recovery, predictable costs and scale

Secure

- Delivered via HPE GreenLake Edge to Cloud Platform
- End to end encryption, immutability, and dual authorization



¹Protection for MS SQL and Amazon RDS will be available in July 2023

**Based on HPE internal testing conducted in October 2022 comparing HPE GreenLake for Backup and Recovery with four competing on-prem and AWS cloud native backup solution.

HPE GreenLake for Backup and Recovery

Consistent and reliable data protection



Effortless management

Through a single cloud native SaaS console



Cost efficient

Pay-as-you-go, unmatched storage efficiency



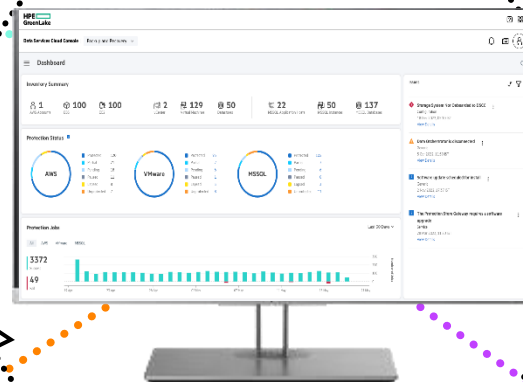
Secure by design

Data immutability, ransomware protection

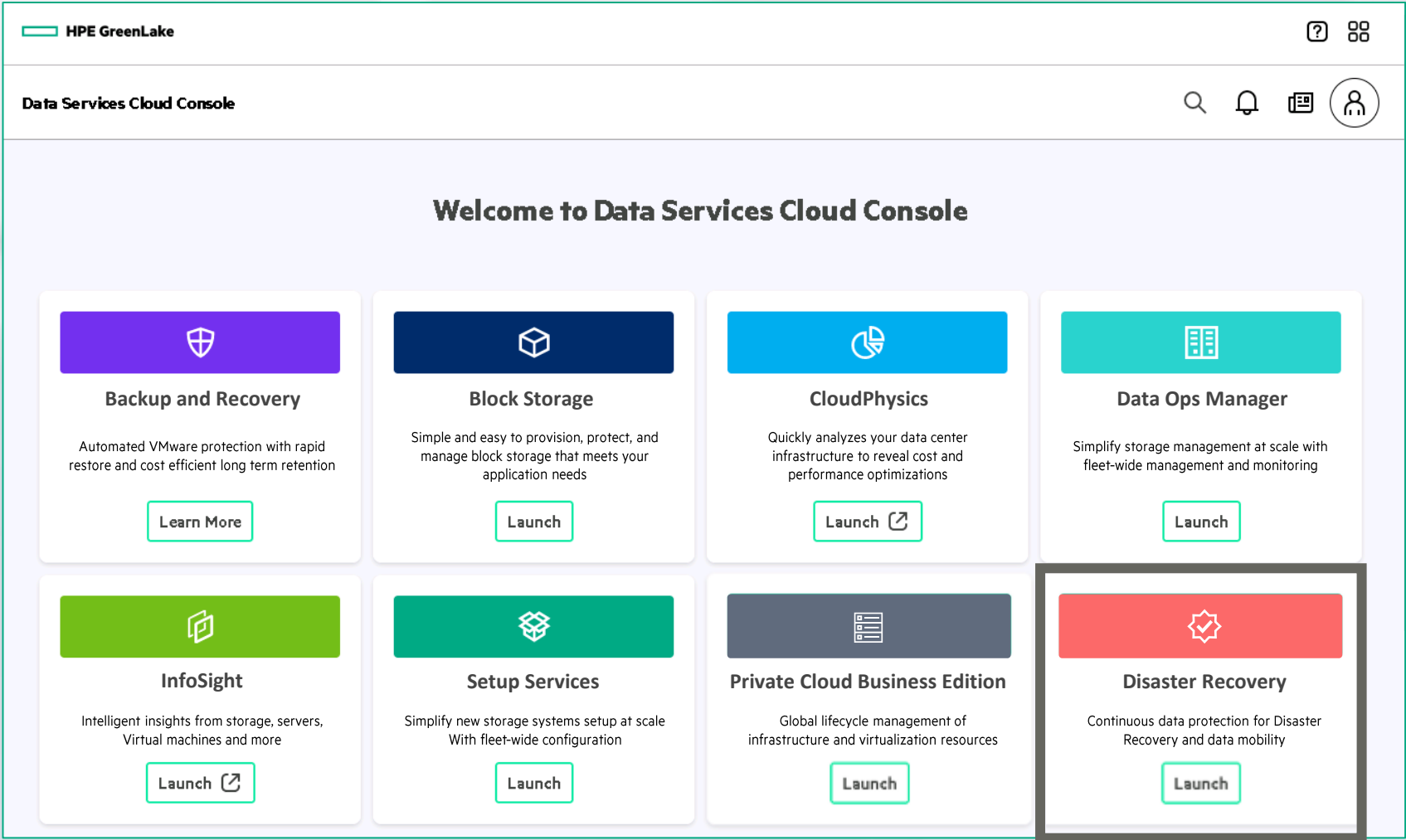


Deliver on SLAs

Rapid recovery, long term retention



HPE Data Services Cloud Console (DSCC) welcome page



CONTINUOUS PROTECTION FOR ANY APP, ANY CLOUD, ANY THREAT

Orchestration | Automation | Analytics



Ransomware Resilience

Real-time detection meets real-time protection and recovery



Disaster Recovery

Foolproof recovery with fastest RTOs and RPOs



Multi-Cloud Mobility

Freedom to innovate across clouds

Continuous Data Protection

vmware



Microsoft Azure



IBM Cloud

ORACLE
CLOUD



Hewlett Packard
Enterprise



Google Kubernetes Engine



IBM Cloud
Kubernetes Service



Amazon EKS



RED HAT
OPENSIFT

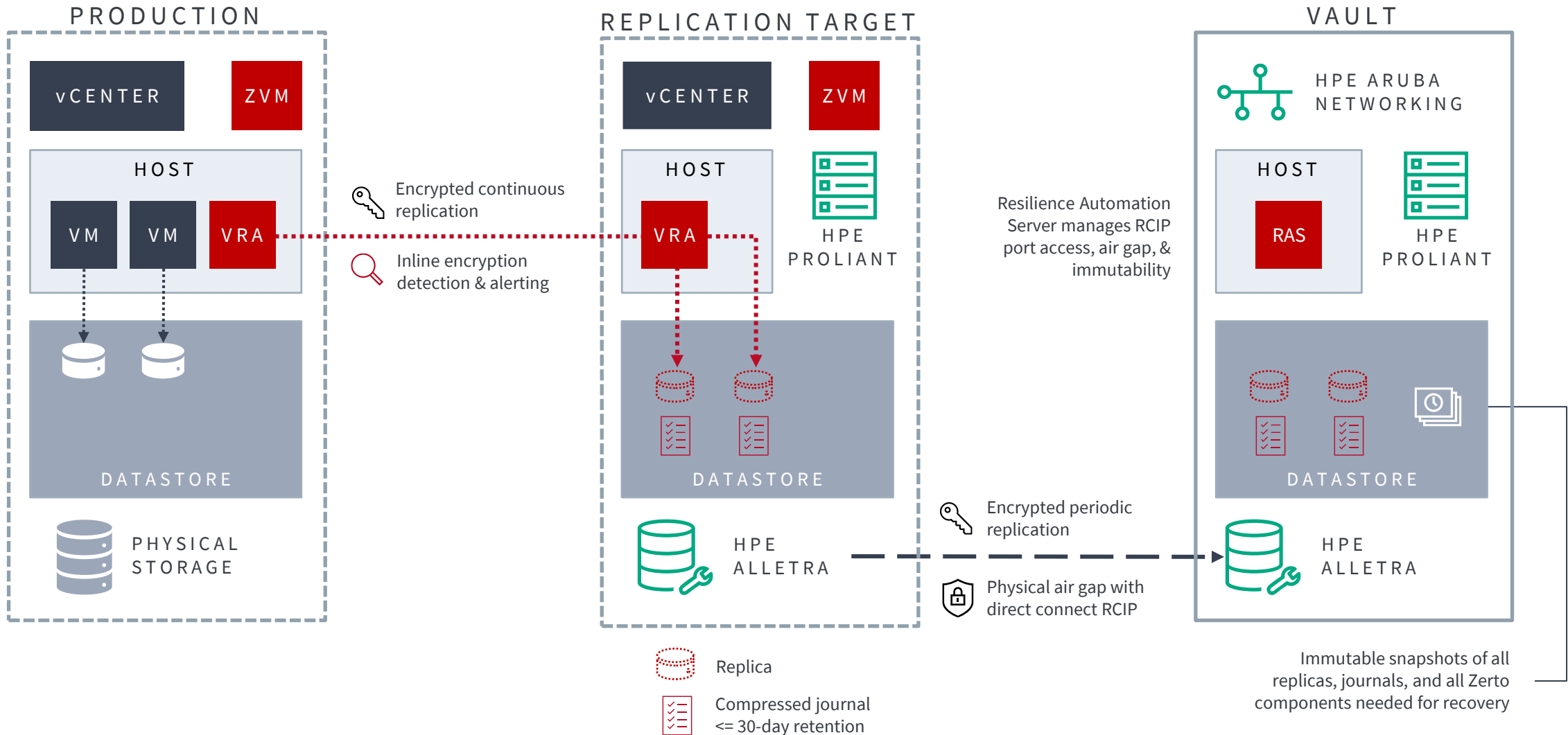


VMware Tanzu

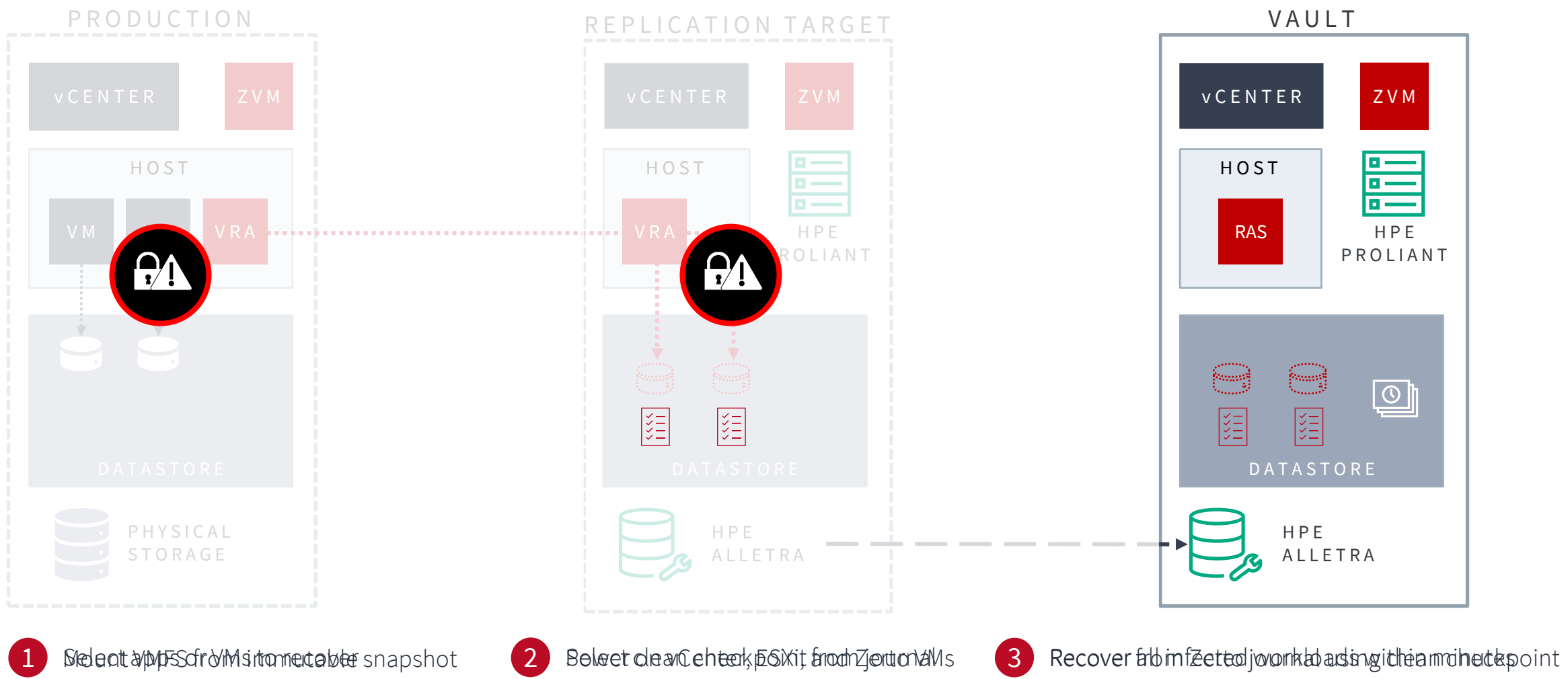


Google Cloud

CYBER RESILIENCE VAULT ARCHITECTURE - DEPLOYMENT



CYBER RESILIENCE VAULT ARCHITECTURE - RECOVERY



The world is hybrid

HPE & PCI create a cloud experience everywhere

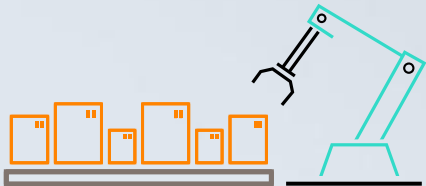
70%

Multi-gen IT | Data sovereignty | Compliance | Regulatory requirements

30%

Speed | Agility | Self-serve | Pay-per use

Edge locations



Private data center



Colocation facilities



Public clouds



aws

Microsoft
Azure

Google Cloud

Thank you



Pressures on IT Operations Teams



Growing Expectations

Lack of Visibility

Disconnected Legacy Tools

Reactive

Escalating Costs

Hybrid Command Center for Digital Ops

Multi-Cloud



Data Center

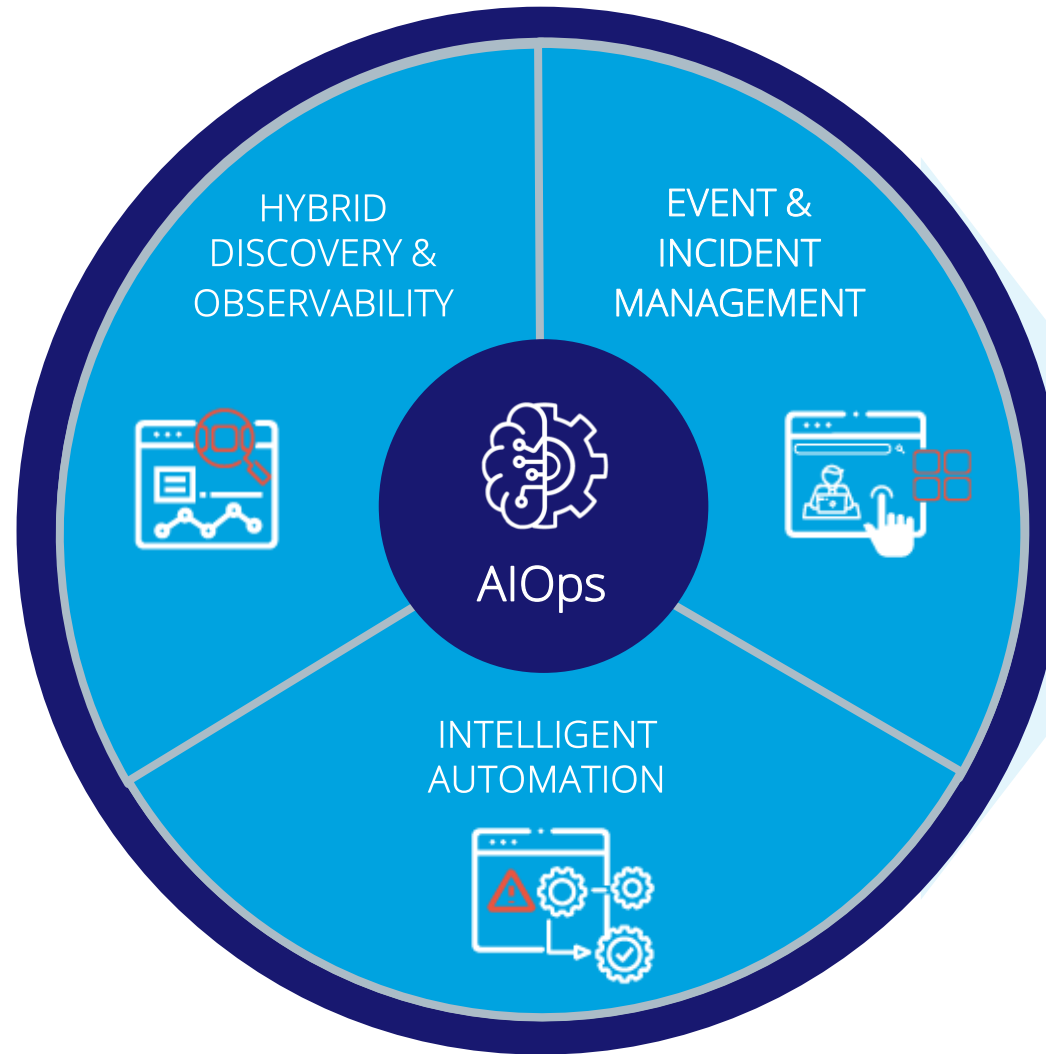


Metrics

Events

Traces

Logs



Centralize and Simplify Monitoring



Understand Resource Dependencies



Detect and Resolve Incidents Faster



Improve Governance, Uptime & Reliability



Save Time and Costs



Improve ITOps and Business Alignment



Discovery → Resolution

	FRIENDSHIP FOYER	UIVERZAAL	VRACHTRUIM	VERTREKHAL	BRIEFINGROOM
08:30 - 09:00	Ontvangst & inschrijving				
09:00 - 09:20		Opening			
09:30 - 10:10		Werkplek Panelsessie	Infradax Overheid Advanced Datacleaning 1/2	Veeam Dataprotectie & recovery	Dynamics Experts CRM
10:20 - 11:00		Security Panelsessie	Infradax Overheid Advanced Datacleaning 2/2	JSR Slimmer Samenwerken	Dell Technologies Datacenter als datawarehouse
11:10 - 11:30	Koffiebreak				
11:30 - 12:10		Datacenter Panelsessie	Infradax Overheid ICT-regievoering	Holm Security Vulnerability Management	Microsoft Microsoft 365
12:20 - 13:00	Lunch groep 1		Cumlaude.ai AI		
13:10 - 13:50	Lunch groep 2		Microsoft Business Applications		
14:00 - 14:40		AI Panelsessie	HPE Hybrid Cloud	Fortinet Networking & Security	
14:50 - 15:10	Koffiebreak				
15:20 - 16:00			Arctic Wolf Detectie en Respons	KPN (Tele)communicatie	
16:10 - 17:00	Borrel				

